

# Lake Don Pedro Water Supply Status Update

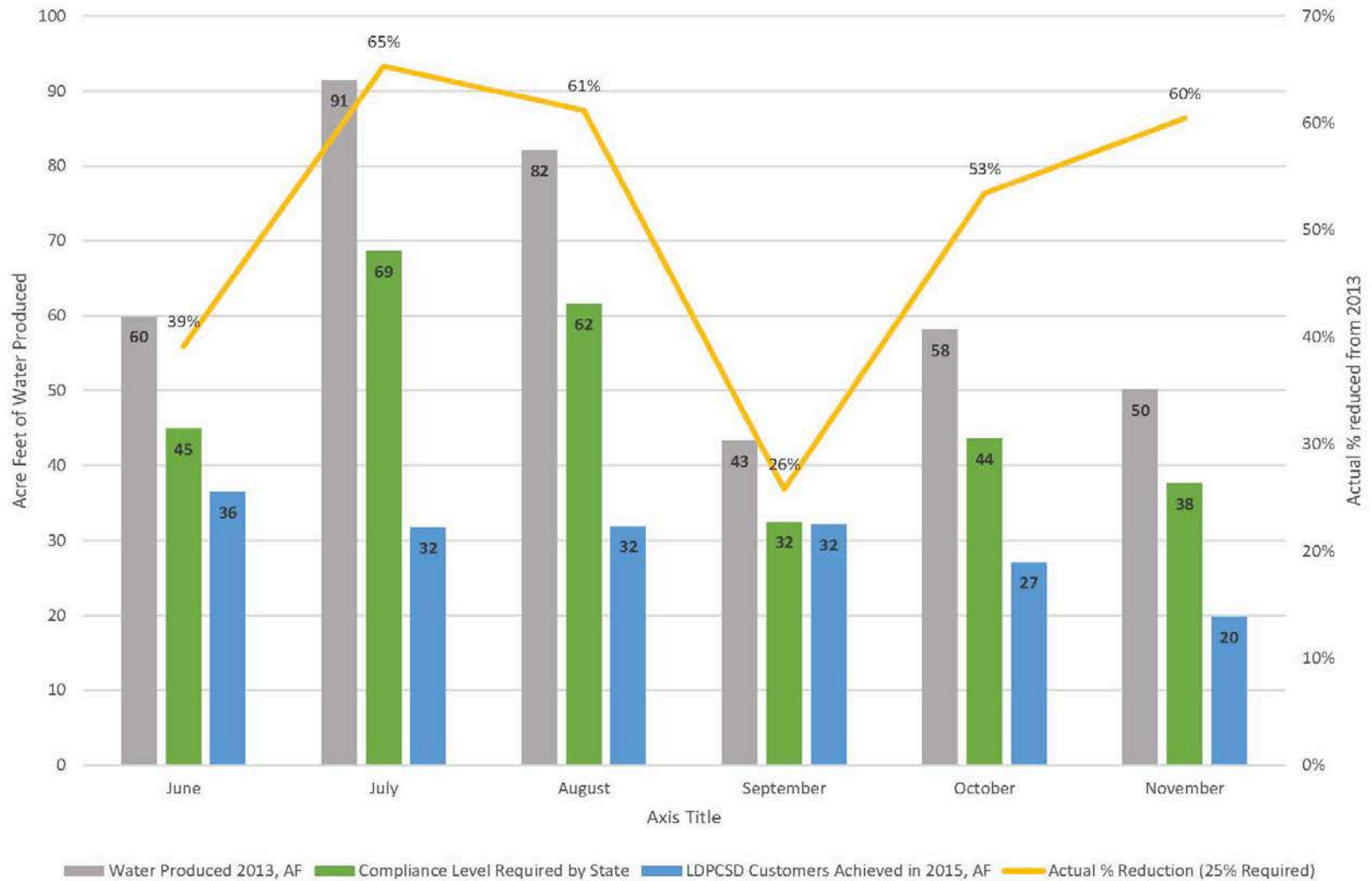
Lake Don Pedro Owners Association  
January 13, 2016

By: Peter J. Kampa, General Manager  
Lake Don Pedro Community Services District

# Discussion Purpose

- Recognize extreme success of customer water conservation effort
- Review current and projected Lake McClure water supply situation
  - Highlight McClure operating constraints
- Discuss status of emergency well construction and operating conditions
- Clarify current mandatory water restrictions

## Lake Don Pedro CSD Compliance with Water Conservation State Mandate 2013 vs 2015

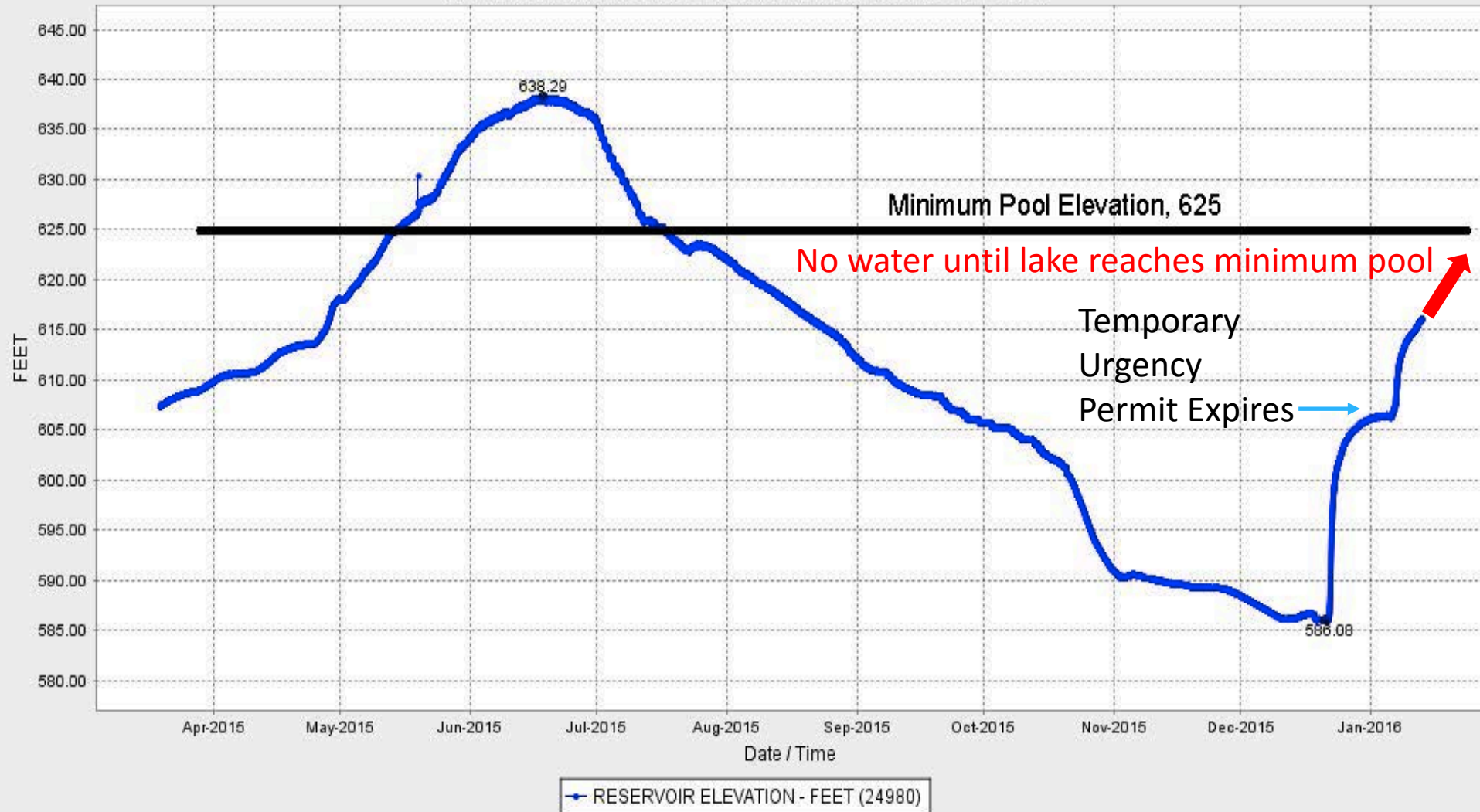


# Current Water Supply

## NEW EXCHEQUER-LK MCCLURE ( EXC )

Date from 03/19/2015 01:14 through 01/13/2016 01:14 Duration : 300 days

Max of period : (06/18/2015 08:15, 638.29) Min of period : (12/21/2015 03:00, 586.08)



# McClure Operations

In order of water use and compliance priority:

- Federal Energy Regulatory Commission (FERC) License conditions
  - Mandatory releases for fish and endangered species
- State Water Resources Control Board and Department of Water Resources conditions
  - Minimum Pool elevation restrictions
  - Must approve changes in releases
- MID water needs
  - Includes diversions to LDPCSD

# New Wells

- 11 test wells drilled, 3 developed
- Purchased 16.5 acres with one existing well (Medina)
  - Well 5 also built on same property
- Pumping Test Evaluation conducted (Report on file)
- Well (safe) yield estimated at 6 months of continuous pumping
- 4 wells currently operating



# Well Cost

Well	Total	DWR 1	SWRCB	USDA***	DWR 2	District
Well 2	\$475,260	\$200,000	\$181,500	\$0	\$82,500	\$0
Medina	\$652,450*	\$0	\$257,600	\$0	\$116,675	\$278,175
Well 5	\$488,825	\$0	\$0	\$415,825	\$73,000	\$0
Wells 3 & 4	\$212,000	\$0	\$0	\$84,175	\$127,825	\$0
<b>TOTAL</b>	<b>\$1,828,535</b>	<b>\$200,000</b>	<b>\$439,100**</b>	<b>\$500,000</b>	<b>\$400,000</b>	<b>\$278,175</b>

\* Includes \$250,000 Medina property purchase cost (16.5 acres)

\*\* Total grant is \$500,000, with \$69,900 received for previous emergency pump barge cost reimbursements

\*\*\* Letter of Commitment expected within 30 days

# Well Production

Estimated Yield, Gallons per Minute

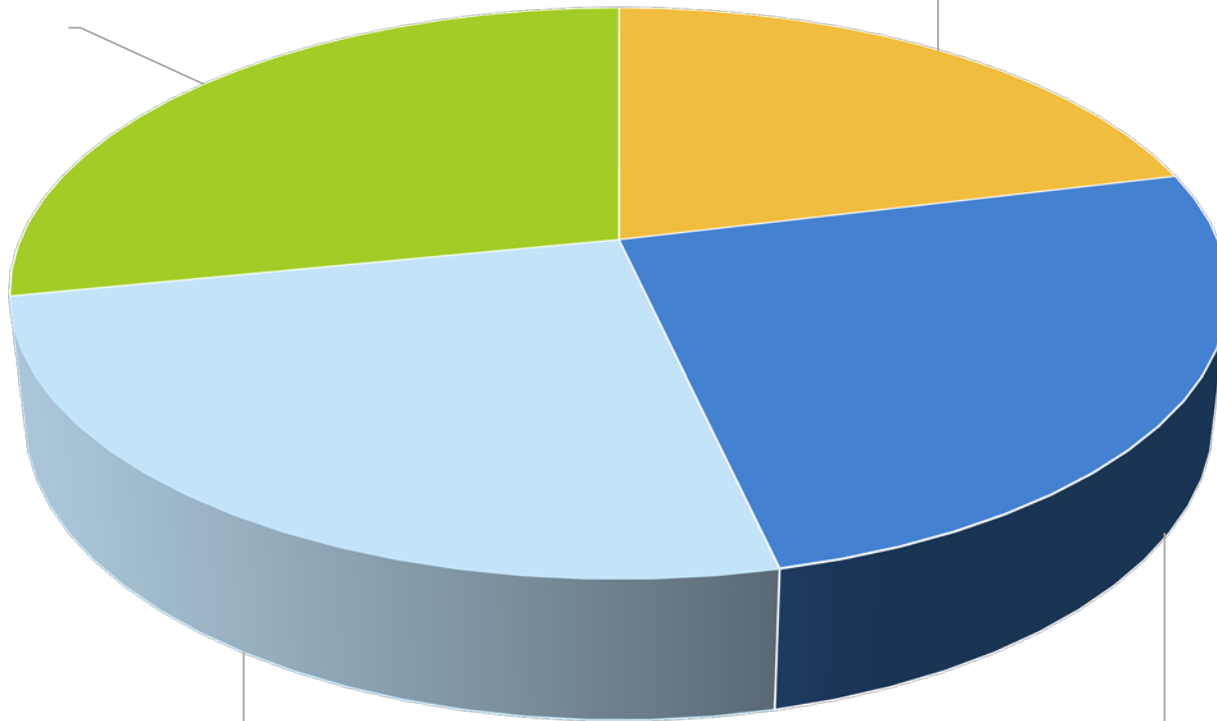
Total = 355 GPM

(New) Well 5, 100

Well 1, 75

(New) Medina,  
90

(New) Well 2, 90





# Peak System Demand, 2015

- Measured coming into water plant; includes
  - Plant process water
  - System losses
  - Customer usage
- Average demand = 309 GPM
- State standards require water supply 1.5 times our peak average
  - 464 GPM

# Supply Outlook 2016

The following are management assumptions only:

- Existing and new wells will meet demand through spring 2016
- Lake McClure water will be available by April 2016 and remain through summer
  - Elevation will increase over minimum pool
  - Let wells recover
- Wells available to meet winter 2016/17 demand
- Some level of water conservation continues throughout 2016

# Our Water Future

1. Well construction finished by June 30, 2016
2. Four wells kept ready and able to serve as backup water supply
3. Must stay on top of leaks
4. Projects to reduce water loss in treatment process
5. Enhanced/continued customer water conservation

# DWR released today!

San Joaquin		
East Stanislaus	City of Modesto	\$5,005,829
Yosemite-Mariposa	Lake Don Pedro Community Services District	\$1,001,547
East Contra Costa County	Contra Costa Water District	\$667,062
		<b>\$6,674,438</b>

- Water Service Line Replacement Project
  - Replace leaky water pipes
- Regional Water Use Efficiency Project
  - Water conservation improvements on your property
    - Laundry to landscape
    - Rainwater catchment
    - Irrigation automation and improvements
    - Toilet replacements
    - Showerhead and faucet replacements
    - Intended for (Mariposa side) Don Pedro and then entire county

# Water Conservation Requirements

- No outside irrigation through March 2015
  - Likely to be extended unless Lake McClure over minimum pool
- 30% mandatory water conservation (from 2014, not last year)
  - Check toilets
  - Drain evaporative coolers
  - Turn off outside water lines
  - Protect pipes from freezing

**Thank YOU!**

# Stay tuned!!

- Follow [ldpcsd.org](http://ldpcsd.org) website or [facebook/ldpcsd](https://www.facebook.com/ldpcsd)
- Provide your email address to the District
- Attend CSD Board meetings
  - Third Monday of each month, 1:00pm District office
  - January 21, 2016 at 1:00pm
- Draft strategic plan available next week, considered by Board 1/21/16